



Our challenge is to build a museum to provide a place to display exhibits and safe storage.

We have over 4,000 objects to tell the history of Bergen County. These artifacts are presently all in storage.

Please consider being a supporter and member of the BCHS.

The Bergen County Historical Society, a non-profit, 501(c)(3) volunteer organization, was founded in 1902 to develop public appreciation for Bergen County's remarkable history, especially through the preservation and study of its material culture. We are the only historical association to focus on the Bergen County as a whole, from its prehistory to the present day. Public programs include placement of informative roadside historical markers, educational events, museum exhibits, monthly lectures, and a library collection.

We need to raise 3 million dollars

The BCHS is the largest landowner at Historic New Bridge Landing. Our museum collections total over 4,000 artifacts not including the library and document collection. These responsibilities require constant attention. **We are not a government agency and presently receive no regular or significant public funding, we rely on private donations and membership.**

Please contact us if you can help!

We do this for present and future generations.

BCHS is proud to be a member of the Historic New Bridge Landing Park Commission.

Membership Category: *If we don't do it, who will?*

Individual	\$20	_____
Family	\$30	_____
Contributing.....	\$35	_____
Junior.....	\$5	_____
(under age 18)		
Library/Historical Org. .	\$20	_____
Lifetime	\$400	_____
Corporate	\$200	_____

Your tax-deductible donation of \$ _____ is greatly appreciated!
(this donation is in addition to your membership dues.)

Bergen County Historical Society
PO Box 55, River Edge, NJ 07661
201-343-9492
contactBCHS@bergencountyhistory.org

Just some of the artifacts – all made or used in Bergen County:

- Van Saun-Wolfkiel slip-decorated red ware and salt-glazed pottery
- Quilts, 3 dozen including the exceptional Betsey Haring appliqué quilt
- Bergen Dutch ladder-back chairs
- Medicine chest of Dr. John Garretson, of Campgaw, including original tools, bottles and herbal remedies
- Daguerreotype of Betty, one of the last eye-witnesses of the Rev War at New Bridge. Born a slave, emancipated in 1840, died in 1870, 98 yrs old.
- 15-foot white-oak dugout canoe, unearthed in Hackensack in 1868
- Bacon settle, dating to 1767
- Effigy pipe, found in Hackensack
- Bergen Dutch jacquard-woven coverlets
- Lighting devices, through the centuries
- 1670 wax doll, with a cloth body stuffed with sawdust, formerly belonging to Dr. John Redmond Cox, of Trenton
- Hackensack "matchstick" furniture, including the earliest dated example of the Hackensack Cupboard (1802, from the Mowry family of Paramus)
- David Arnot's oil painting of the Banta Docks on the Hackensack River, c.1860
- Only known large "crayon portraits" done by miniaturist James Van Dyke, of New York, depicting sons of Daniel P. Demarest of the Flatts (Oradell)
- Zinc Cigar Store Indian
- Button collection
- Brick collection!
- John Hopper's tavern sign with portrait of Jefferson, done in his lifetime
- Goddess Flora in her Chariot – 3 water colors by Margarete Van Wagener
- Chip-carved spoonboards
- Extensive library & document collection located in Felician College, Lodi



Bergen County Historical Society
Historic New Bridge Landing

1 Steuben House. Jan and Annetje (Ackerman) Zabriskie prospered as miller and merchant at this site. They built a five-room stone cottage in 1752 and enlarged to present size around 1767 by addition of the second story along the rear and the entire north block with its paneled parlor and bed chamber. Described in 1784 as a "Large Mansion House containing twelve rooms built with stone, with Out-houses consisting of a Bake House, Smoke House, Coach House, and two large Barns, and a Garden, Forty Acres of Land consisting of Meadow Land and two Orchards." The State of NJ presented the confiscated war-damaged house to Major-General Baron von Steuben in 1783. Steuben's aide-de-camp, Capt. Benjamin Walker resided here, while Steuben made regular visits and summer retreats from his Manhattan lodgings. He sold it back to the Zabriskies in 1788. Owned by NJ. Selections from BCHS collections displayed here. Open for special events.



Steuben

2 New Bridge. A "New Bridge" with sliding draw was built here in 1744. Eye-witness Thomas Paine described this small bridge as "our first objective" in the American retreat from Fort Lee on November 20, 1776, memorializing the darkest hour in the hopes for American independence as the "times that try men's souls." The crossing saw much activity during the war because it is the narrows of the river above Newark Bay. The present Pratt-type Low Truss Swing Bridge opened February 2, 1889. Closed to automobile traffic in 1956. Listed on NJ and National Registers by BCHS as the oldest highway swing-bridge in State. Restored by the County of Bergen in 2000.



Paine

3 New Bridge Landing. A narrow mill landing, built of log cribbing in 1744, could accommodate 50-ton sloops. Iron was brought here from Ringwood and Long Pond for transshipment. Present bulkhead built shortly after completion of present bridge in 1889. It includes a V-shaped notch so that Captain D. A. Zabriskie could cradle his schooner when the tide ran out, its mast lashed to a tall pole set in the ground to keep it upright.

4 Zabriskie's Mills. Johannes Ackerman resided near the present intersection of Main St & Elizabeth Ct about 2

HISTORIC NEW BRIDGE LANDING

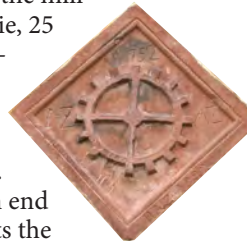
Headquarters of the Bergen County Historical Society

Walking Tour



Please see our website for more information about HNBL, BCHS collections and upcoming events. www.bergencountyhistory.org

blocks west. He built a grist-mill, 40 ft by 20 ft, containing two pairs of grinding stones in 1714 at the outlet of Cole's Brook. Jan Zabriskie purchased the mill in 1745. His grandson, John J. Zabriskie, 25 years old, died trying to free the water-wheel in 1793. High tide was trapped in Cole's Brook behind a dam, creating an artificial pond twice daily to run the waterwheel during ebb tide. The date stone lozenge set in the south end of the Zabriskie-Steuben House depicts the tide-driven waterwheel. The mill burned down in 1852.



Steuben House date stone

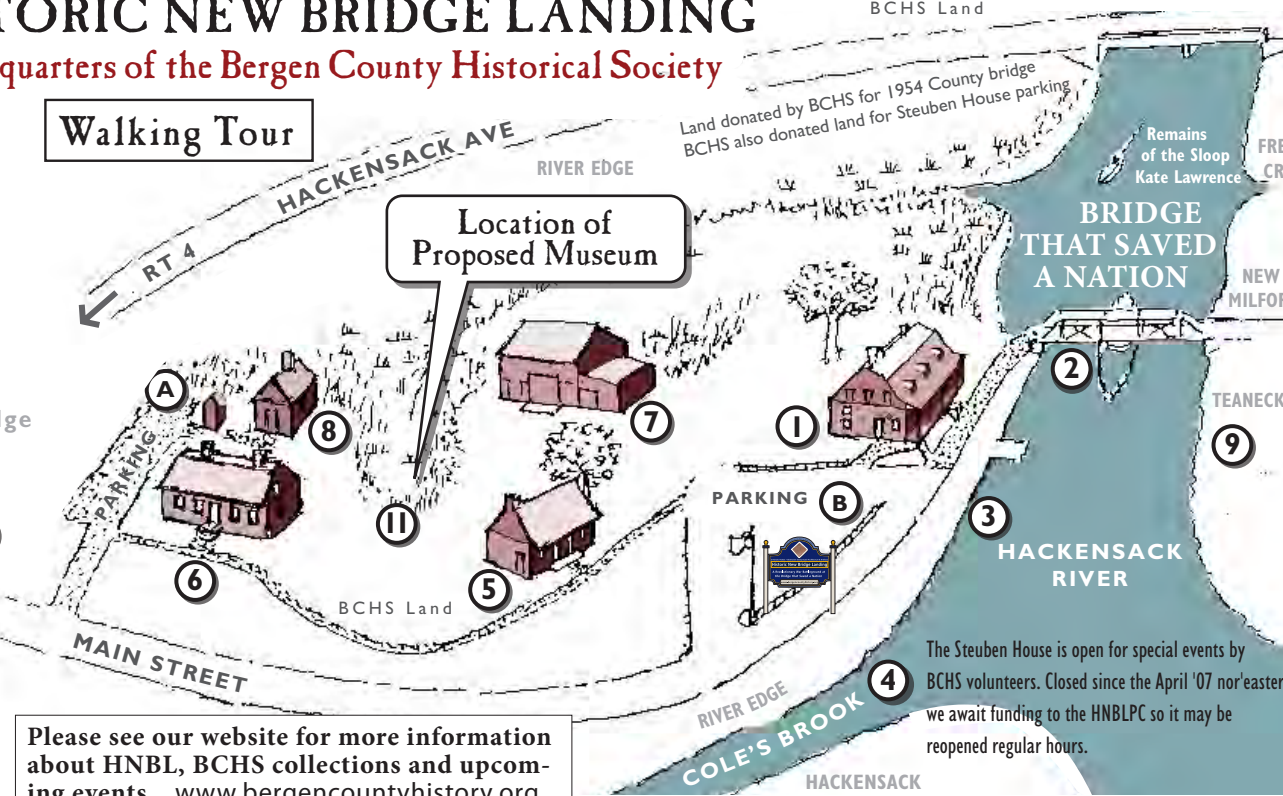
5 Demarest House Museum. Two-room sandstone cottage was built in 1794 for miller John Paulson. Stove chimney in east room is a technological advance over fireplaces. House removed from original site beside French Burial Ground in New Milford in 1955-56. Displays collection of Demarest family and Bergen Dutch artifacts. Open for special events and by appointment. Owned by Blauvelt-Demarest Foundation.

6 Campbell-Christie House. Jacob Campbell, a mason,

erected this gambrel, center-hall sandstone dwelling at the busy intersection of River Road and Henley Avenue, New Milford, in 1774. It features wooden trapezoidal lintels, painted to look like sandstone. John Christie, blacksmith, purchased this house in 1795 and continued its operation as a tavern. J. Walter Christie was born in the house in 1865. J. Walter is considered the "father of the modern tank" and best known for developing the Christie suspension system used in a number of World War II-era tank. Threatened with demolition the house was moved to River Edge onto Bergen County Historical Society land in 1977 by the County of Bergen. It is operated and funded by BCHS, a volunteer non-profit organization. Open for special events. Restored as an 18th century tavern. Gift shop and one rest room.

7 Westervelt-Thomas Barn. Built 1889 by Peter J. Westervelt on his farm on Ridgewood Road, Washington Township. Henry Thomas purchased farm in 1906. Donated to BCHS and relocated in 1955.

8 Out-Kitchen. Authentic out-kitchen built by BCHS in 1990, using antique materials, replicating John R. Demarest Out-Kitchen in Demarest. Includes beehive



AMERICAN BATTLEGROUND

While a constant arena for conflict, the following significant Revolutionary War events are associated with HNBL:

- British troops under Major General Vaughan attacked the American rear guard on November 21, 1776 and seize the New Bridge, which American engineers were dismantling.
- British and Loyalist troops under command of Captain Patrick Ferguson attacked about 40 Bergen militiamen at New Bridge on May 18, 1779.
- Major Henry Lee led American troops from New Bridge on August 18, 1779, to attack the British earthworks at Paulus Hook (Jersey City).
- A force of Bergen Militia and Continental troops attacked 600 British troops and German auxiliaries at New Bridge on their retreat from Hackensack and Paramus on March 23, 1780, during the two hours it took for the British to repair and cross the New Bridge.
- A body of 312 British, Loyalist and German infantry, attacked and overwhelmed an American outpost at New Bridge commanded by Lieutenant Bryson on April 15, 1780.
- Eight British soldiers were killed, and several wounded, by friendly fire when British troops attempted to attack a body of Bergen Militia in the Zabriskie-Steuben House at New Bridge on May 30, 1780.
- Brigadier General Anthony Wayne led American troops from New Bridge on a raid against the Bull's Ferry Blockhouse on July 20, 1780.
- General Washington made his headquarters in the Zabriskie-Steuben House during the Steenrapie encampment of the Continental Army, encompassing nearly 14,000 men, on September 4-20, 1780.

oven and smoke room. These separate kitchen structures kept the heat of cooking out of the main dwelling during summer and prevented oven fires from involving the loss of the family's residence. Located next to the Out-Kitchen is a Out House from Closter.

9 Brett Park. Part of the New Bridge battlefield during the American Revolution. Site of Rekow's Farm and Benson's campgrounds. The park was named after former Teaneck Mayor Clarence Brett in 1971.

10 Future Visitor Center. Planned for the former auto-part yard. Land acquired by the HNBL Park Commission in 2005. Proposed building is a facsimile of the Bergen County 1819 Court House.

11 Future BCHS Museum Building. We plan an elevated building to allow for exhibits and safe storage of the BCHS collections.

DIRECTIONS: Route 4 East or West, take Exit "Hackensack Avenue North". Go thru 2 lights, bear right, take jughandle to Exit for "Main Street", make a right at end of jughandle. Park in Lot A, B or C. 1201 Main St, River Edge. One block north & east of New Bridge Landing Train Stop on the Pascack Valley Line.