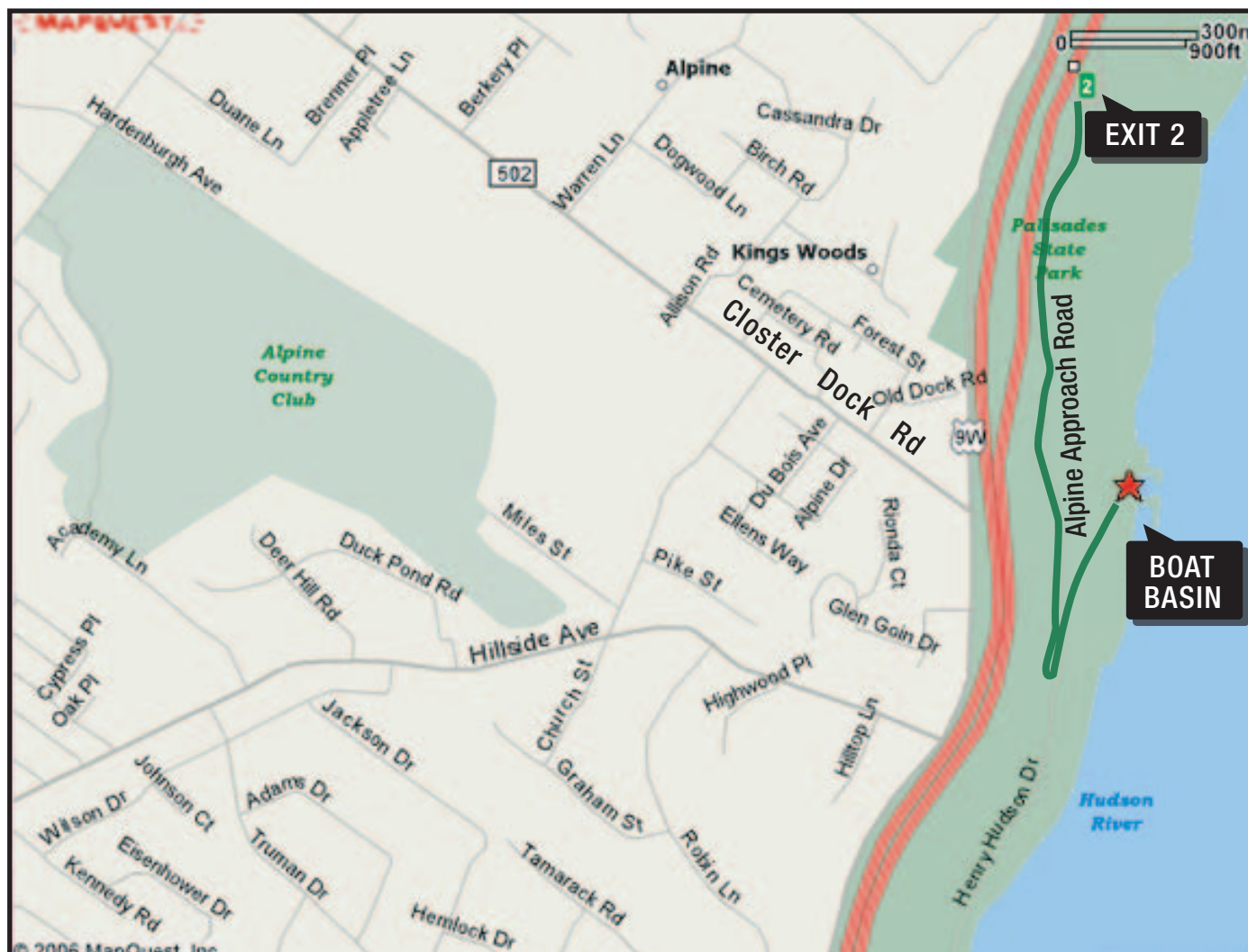


DIRECTIONS to MEERWALD SAIL DEPARTURE POINT at ALPINE BOAT BASIN



Alpine Boat Basin is on the Hudson River in Alpine, New Jersey, about seven miles north of the George Washington Bridge, at the base of Alpine Approach Road (about one mile north of Closter Dock Road at Exit 2 of the PIP).

From the Palisades Interstate Parkway (northbound): Take Exit 2, U.S. Route 9W, Alpine, Closter. Stay straight off the exit, passing Park Headquarters. Follow the long, narrow road downhill. When almost at the river, go $\frac{3}{4}$ around the small circle, then continue the rest of the way down the hill.

From the Palisades Interstate Parkway (southbound): Take Exit 2, U.S. Route 9W, Alpine, Closter. Turn right on Rt. 9W. Turn right at the first light (Alpine Approach Road.), then bear right. Pass Park Headquarters. Follow the long, narrow road downhill. When almost at the river, go $\frac{3}{4}$ around the small circle, then continue the rest of the way down the hill.

From U.S. Route 9W (cars, commercial vehicles, and bicycles): Turn east on Alpine Approach Road (about 1 mile north of Closter Dock Road). Then bear right. Pass Park Headquarters. Follow the long, narrow road downhill. Almost at the river, go $\frac{3}{4}$ around the small circle, then continue the rest of the way down the hill.



Bergen County Historical Society ^a www.bergencountyhistory.org

See the Palisades Interstate Park website for more info about the park: <http://204.2.104.168/>