

*Help Support Our Mission -
To Build a "New" NJ History Museum
in Bergen County, NJ*

Announcing the New Jersey History Museum Capital Campaign. A thrilling campaign to ensure the future of New Jersey History we are erecting a 3,750 square foot museum building at Historic New Bridge Landing that will serve as a beacon to democracy in Bergen County!



Your Donation Matters !

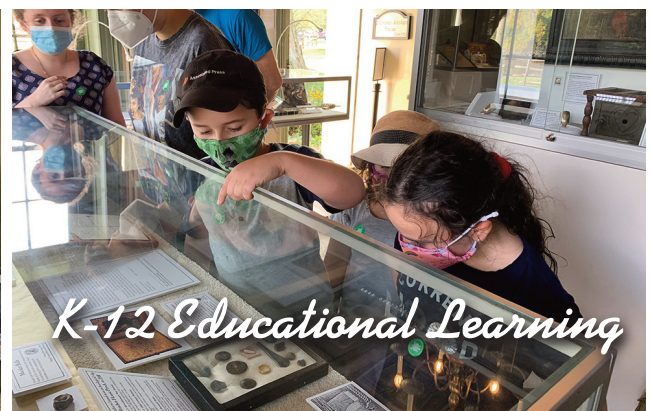


**Bergen County,
Where America Begins**

Our goal is simple - to build a world-class permanent museum that will herald and display the collective history of New Jersey. Site plans have been completed and approved by the DEP. Construction is slated to begin Spring 2024 but we need your help to fund our initiative.



The new museum will be located at Historic New Bridge Landing Park, the 13-acre historical landmark vista located in River Edge, NJ - the heart of Bergen County. The sacred parcel of land has been preserved as a slice of Dutch countryside at the narrows of the Hackensack River. Famed for its role during the American Revolution and George Washington's headquarters in 1780, this hallowed ground has survived development by the preservation efforts of the Bergen County Historical Society. The new museum will offer safe storage and environmentally controlled exhibit space, a theater and orientation gathering space and will serve as a cultural heritage site for visitors.



Every gift makes a difference. As a 501 (c)3 non-profit the new museum construction and all facets exhibits and new educational programming will rely on donations for funding.

Philanthopist - \$1,000 Supports the new museum's theater section where educational events will be held for years to come. Your name will be highlighted in our newsletter and on-site at the new museum. You'll receive free museum and site admission and invites to our special events.

Society Collections - \$5,000 & Up Supports the new museum's distinguished collections that expand several centuries. Our collection of over 4,000 original objects, works of art, textiles and manuscripts will need to be displayed within the walls of the new museum. The BCHS collections comprise the greatest survival of significant Bergen Dutch artifacts and documents in the public domain. Your name, company name or foundation name will be highlighted next to the core exhibit as underwriting the space and programming. Includes free museum and site admission and invites to our special events.

Friend of the Museum - \$10,000 & Up Supports and funds the construction costs of the new museum. Your generous donation will be recognized on-site with inclusion on the main entrance Donor Walkway Wall and in our Main Exhibit Hall and on our website. Your name/company or foundation name will be visible within our newsletter and press materials. You'll receive free museum and site admission and invites to our special events. This level offers the ability to secure the museum for a special private event (excludes catering), free of charge.



Give In Memory Donations - Remembrance • Anniversary • Birthday • Any Special Occasion Your donation will be recognized with a thank-you card for your contribution that can be sent to you the donor or the family of the person being honored.

Long Term Donation Plans - By selecting this plan you can ensure our exhibits, events and education for year to come. Information available up request.

Follow us on Facebook - [bergencountyhistory](https://www.facebook.com/bergencountyhistory) and Instagram [#bergencountyhistory](https://www.instagram.com/bergencountyhistory)




Donor Advised Funds (DAF) Make a donation to the BCHS form for the new museum capital campaign with your Donor Advised Fund or Individual Retirement Account (IRA). Every gift will have an impact and fund the building and creation of the new museum.

MAKE A DONATION:
<https://www.bergencountyhistory.org/donate>

For more information on donating or to set up a site visit, please contact:
Martha Morley at: (201) 493-7996 or email: bergenhistorymuseum@gmail.com

Giving by US mail:
 Check donations made out to the BCHS can be forwarded to:
 BCHS, PO Box 55, River Edge, NJ 07661-0055



Who we are:
 The Bergen County Historical Society is a 501(c) non-profit, volunteer organization. 100% of tax-deductible donations go to fulfilling our mission.

GuideStar

